

DESCRIPTION

The Alpha & Beta Industrial Series of axial roof units are designed for a wide range of free intake and ducted exhaust systems. These durable and robust units feature adjustable pitch impellers which allows for optimum air flow and power efficiency.

There are 6 sizes in each range extending from 500 to 1000mm diameter.

Typical Applications

Exhausting clean air and a range of toxic, noxious and corrosive gases from a wide range of commercial and industrial applications.

Features

- Wide choice of speeds available.
- Adjustable pitch impellers provide a wide range of performances.
- Impeller blades can be GRP, aluminium, nylon or anti-static to suit the application. GRP blades are standard.
- Shutters are standard on the RVLE range and an optional extra on the RDLE units. (See **Special Note**).
- Can be used for free intake or ducted systems.
- Can be mounted at angles up to 30°.
- All standard motors are speed-controllable using variable speed drives.
- Multi-speed motors as well as motors to meet Ex d, Ex e, Ex nA or Ex tD Standards can be supplied.
- For applications prone to high prevailing winds refer to **Special Note**.

Construction

Pressed galvanised steel base; cowls and windbands are of plastic, fibreglass or galvanised steel. Shutters are fitted as standard to the Beta series and are an optional extra on the Alpha series.

Impeller blades are GRP as standard with an option of aluminium, nylon or anti-static materials where required. Metal components have a corrosion resistant finish.

Motors

Type - squirrel cage induction motors.
Electricity supply - motors to suit a wide range of voltages and frequencies can be supplied.
Bearing - sealed-for life, ball.
Speed-controllable using variable speed drives.
See pages O-3/4 for details on these motors.
Motors with 2-speed windings or to meet Ex d, Ex e, Ex nA or Ex tD Standards can be supplied.

Internal Thermal Protection

Thermistors can be provided on all motors except where Standards prohibit their use.

Testing

Air flow tests to BS848:Part 1, 1980
Noise tests to BS848:Part 2, 1985

Wiring Diagram

See pages N-6/7 diagrams DD 1, 2, 3, 9.

SMOKE-SPILL APPLICATIONS

The Beta Industrial RSSL Series of smoke-spill fans has been fully tested to meet the air performance and high temperature test requirements of Standards AS/NZS1668.1:2015 and AS4429:1999.

For advice on smoke-spill wiring requirements refer to AS/NZS1668.1:2015

See page C-7/8 for details of the smoke-spill range.

Special Notes

Quick select envelope curves are shown on pages D-8/9. Accurate selections, including comprehensive noise data, can be obtained from your local Fantech office or by using the Fans by Fantech Product Selection Program. Refer to Fantech for performances at speeds other than shown.

When shutters are fitted ensure the roof unit is mounted with the shutter spindle pointing down the roof. When shutters are fitted to the Alpha series derate the performance by 15-20%.

Where prevailing winds are high we recommend the fitting of Magloks®, see page J-8 for details. For capacities greater than shown for the Alpha & Beta Industrial series, refer to the HC and SS series on pages D-60/62.

TECHNICAL DATA

Model

RDLE..

RVLE..

RSSL..

0504

0506

0564

0566

0634

0636

0638

0714

0716

0718

0804

0806

0808

1004

1006

1008

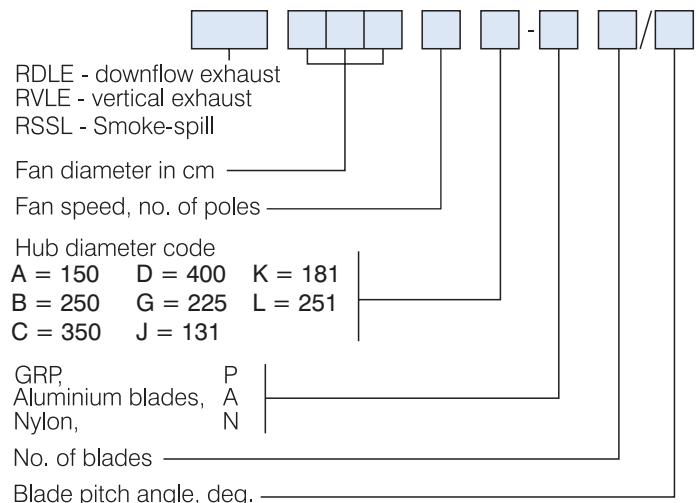
Fan Speed
rev/sec

Max. Motor
kW

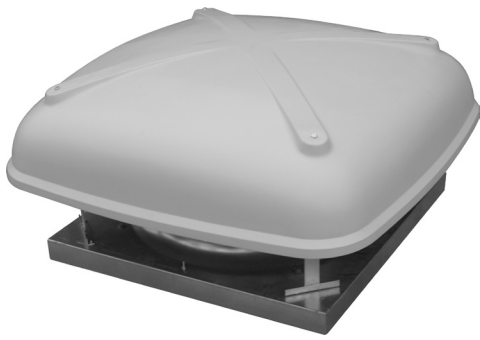
Model	Fan Speed rev/sec	Max. Motor kW
RDLE..		
RVLE..		
RSSL..		
0504	24	1.5
0506	16	0.37
0564	24	2.2
0566	16	0.75
0634	24	4
0636	16	1.1
0638	12	0.55
0714	24	5.5
0716	16	2.2
0718	12	0.75
0804	24	7.5
0806	16	4
0808	12	1.5
1004	24	7.5
1006	16	5.5
1008	12	3

Amperages for motors can be obtained at time of order.

HOW TO ORDER



ALPHA INDUSTRIAL SERIES



SUGGESTED SPECIFICATION

The axial roof ventilators shall be of the Alpha Industrial Series as designed and manufactured by Fantech Pty. Ltd.

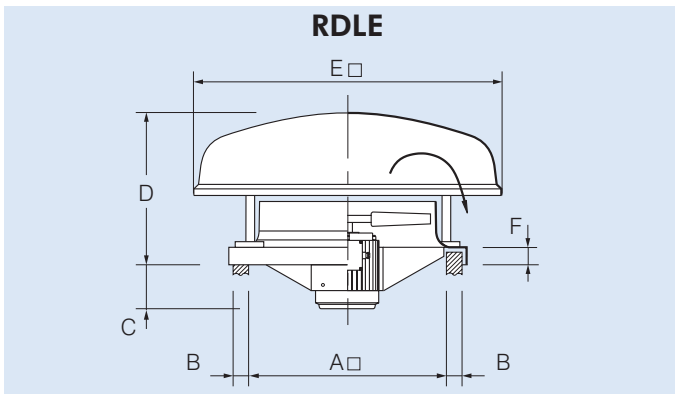
The axial impellers shall be adjustable pitch manufactured and supplied with blades of GRP, nylon, aluminium or anti-static material. (GRP is standard).

The unit base shall be of pressed galvanised steel and shall incorporate an entry cone to minimise entry losses to the fan. Cowls shall be of plastic or fibreglass.

The base may be powder-coated if required (optional extra).

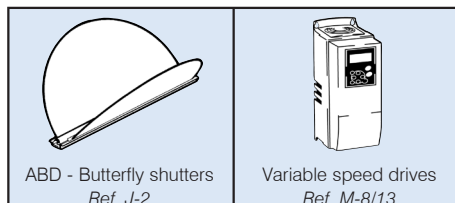
All models shall incorporate fans fully tested to BS848:Part 1, 1980 for air flow and BS848:Part 2, 1985 for noise.

DIMENSIONS

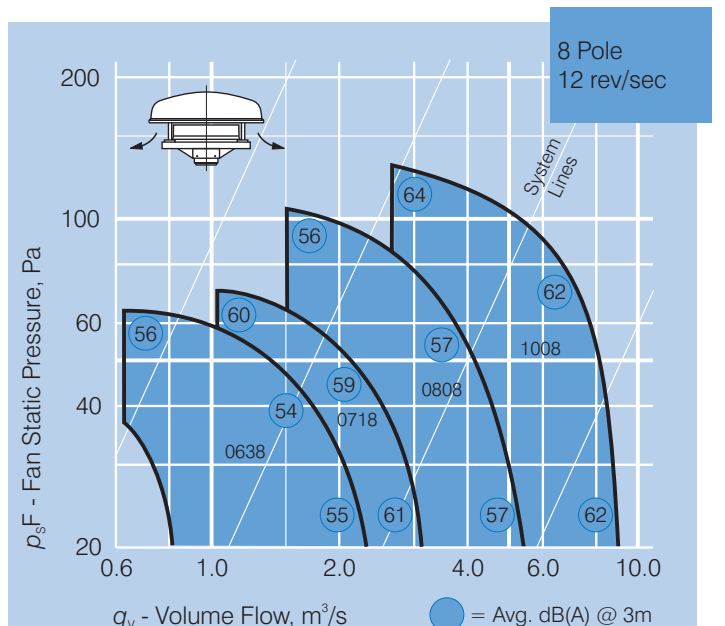
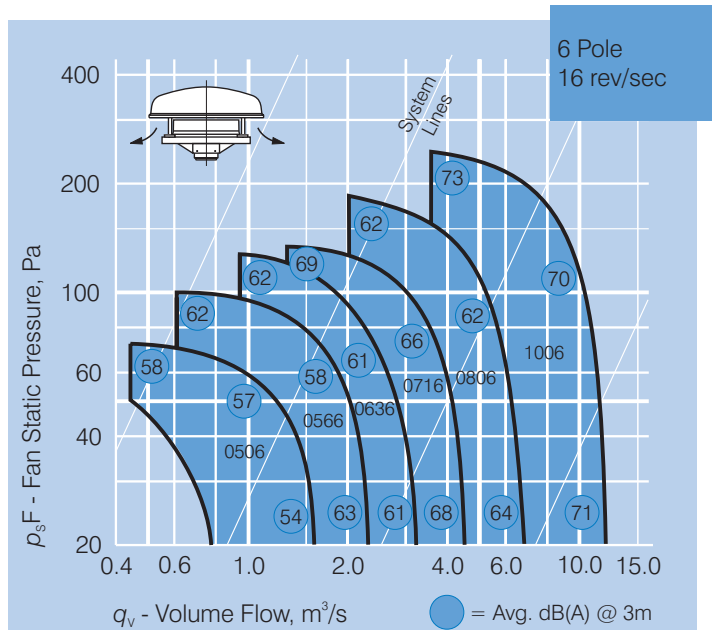
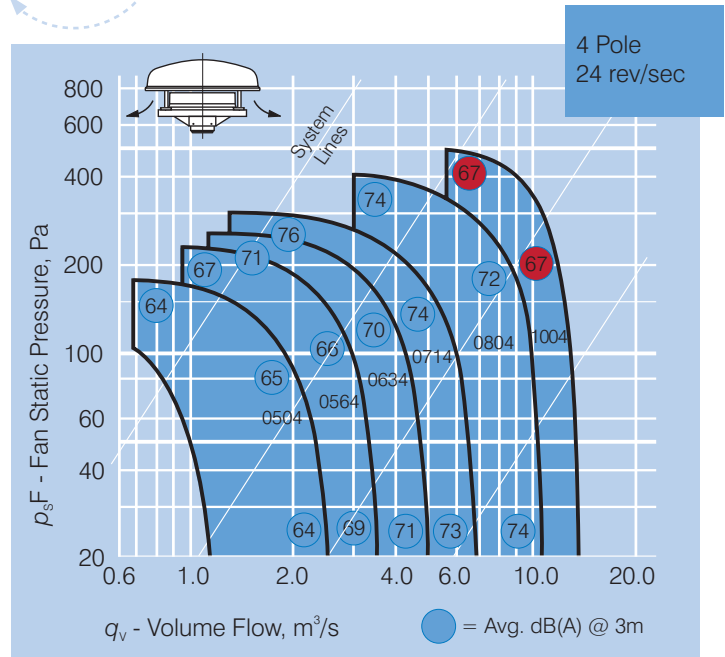


Model RDLE...	Dimensions, mm					
	A□	B	C max	D	E□	F
0504/6	670	50	182	540	890	80
0564/6	670	50	182	540	890	80
0634/6/8	780	100	285	600	1180	80
0714/6/8	780	100	267	600	1180	80
0804/6/8	860	100	338	700	1395	80
1004/6/8	1080	100	338	776	1640	80

ANCILLARY EQUIPMENT



Scan the QR code to view more information online.





SUGGESTED SPECIFICATION

The axial roof ventilators shall be of the Beta Industrial Series as designed and manufactured by Fantech Pty. Ltd.

The axial impellers shall be adjustable pitch manufactured with blades of GRP, nylon, aluminium or anti-static material. (GRP is standard).

The unit base shall be of pressed galvanised steel and shall incorporate an entry cone to minimise entry losses to the fan. Windbands shall be of fibreglass or galvanised steel.

The base may be powder-coated if required (optional extra).

All models shall incorporate fans fully tested to BS848:Part 1, 1980 for air flow and BS848:Part 2, 1985 for noise.

Smoke-Spill Applications

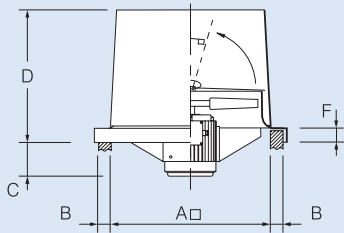
The axial roof ventilators shall be of the RSSL vertical discharge Beta Industrial Series as designed and manufactured by Fantech Pty. Ltd.

The windbands shall be constructed from galvanised steel. Impellers shall be adjustable pitch manufactured from aluminium and constructed to suit the elevated temperatures, with blades pinned as required by the manufacturer.

All fans shall be tested to meet the air flow, temperature and structural requirements of AS/NZS1668.1:2015 and AS/NZS 4429:1999.

DIMENSIONS

RVLE/RSSL



Model

RVLE...

Dimensions, mm

RSSL...

A□

B

C max

D

F

0504/6

670

50

182

550

80

0564/6

670

50

182

550

80

0634/6/8

780

100

285

690

80

0714/6/8

780

100

267

690

80

0804/6/8

860

100

338

765

80

1004/6/8

1080

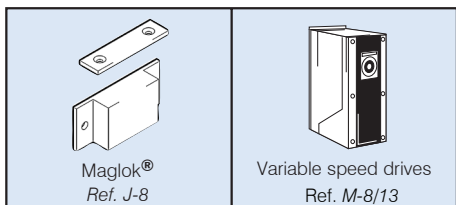
100

338

855

80

ANCILLARY EQUIPMENT



Scan the QR code to view more information online.

