

TEMPERATURE SENSORS



TFR / TFR-E

Room sensor with plastic housing for outdoor and industrial use.



TFW

Room sensor with plastic housing for indoor use only.



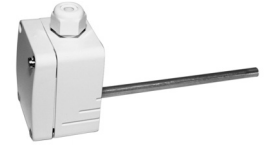
TFT / TFT(XL)

Immersion sensor with brass sensor rod and immersion sleeve.



TFA

Contact sensor with stainless steel sensor rod.



TFK

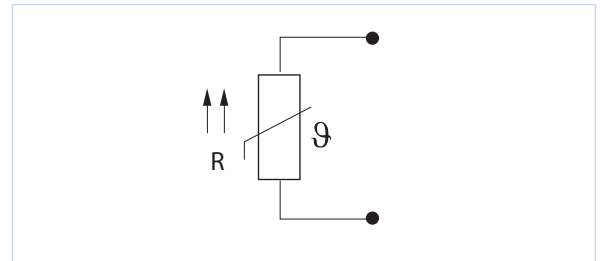
Duct sensor with plastic housing and stainless steel sensor rod.

DESCRIPTION

The Fantech range of temperature sensors measure ambient air according to parameters set in the control unit.

- These sensors use a silicon PTC element that changes its resistance depending on the ambient temperature
- All TF temperature sensors are passive sensors, so they do not require power

WIRING DIAGRAM



TECHNICAL DATA

Model Number	Permissible Temperature Range	Protection Class	Sensor Sleeve / Material	Dimensions, mm	Connection Cable Length, m
DCV-TEMP-TFR	-20°C to +60°C	IP54	-	75W x 75H x 37D	-
DCV-TEMP-TFR-E	-20°C to +60°C	-	-	Built-in sensor of TFR	-
DCV-TEMP-TFW	-35°C to +70°C	IP20	-	84W x 84H x 23.5D	-
DCV-TEMP-TFT	-20°C to +105°C	IP43	Ø7mm x 50mm / Brass	-	1.9
DCV-TEMP-TFT-XL	-20°C to +105°C	IP43	Ø7mm x 50mm / Brass	-	4.0
DCV-TEMP-TFA	-20°C to +85°C	IP67	Ø6mm x 50mm / Stainless steel	-	2.0
DCV-TEMP-TFK	-50°C to + 120°C	IP65	Ø7mm x 135mm / Stainless steel	50W x 65H x 44D	-