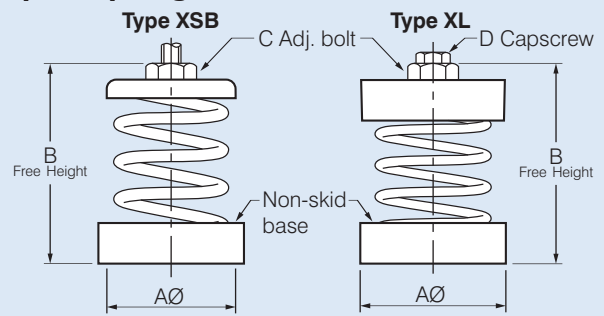


# SPRING MOUNTS - 25mm DEFLECTION



## DIMENSIONS & SELECTION TABLES

### Open Spring Mounts



## FEATURES

A low cost easily-installed, all-purpose spring mount in which the spring can be quickly interchanged to give a wide range of load-deflection characteristics, provides effective isolation of noise and vibration.

We have only featured the spring mounts most commonly used with the equipment shown in this catalogue.

### Types XSB and XL only

- heavy-duty steel spring.
- colour-coded for easy identification of the load range.
- built-in levelling bolt with locking capscrew, capable of compensating for full static deflection.
- separate top and bottom location cups.
- rubber-isolated bolt hole in base.
- moulded noise-absorbing rubber base cup with non-skid surface.

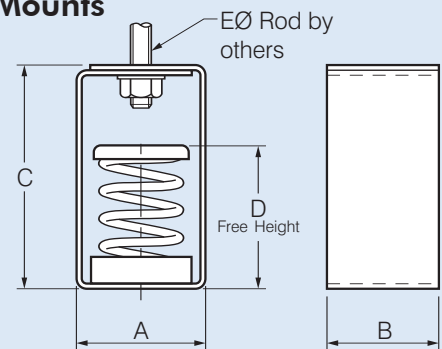
### Type SHS only

- heavy-duty steel spring.
- colour-coded for easy identification of the load range.
- heavy-duty steel cage.
- large diameter lower isolated rod clearance hole in the cage.
- fully weatherproofed.

If features or ratings are required beyond that shown, please contact Fantech.

Model Number	Colour	Max. Load kg/mt	Static Defl. mm	Dimensions, mm			
				AØ	B	C	D
XSB-9	Yellow	10	33				
XSB-10	Brown	15	33				
XSB-11	Blue	30	33				
XSB-12	Black	50	28	55	106	M12	-
XSB-13	Red	75	25				
XSB-14	Green	125	25				
XSB-16	Grey	175	20				
XSB-17	Orange	200	15				
XL-92	Yellow	50	33				
XL-93	Brown	100	33	80	127	M16	M10
XL-94	Blue	150	30				
XL-95	Black	200	30				
XL-96	Red	250	28				
XL-97	Green	300	28	80	132	M16	M10
XL-98	Grey	400	25				

### Hanger Mounts



Model Number	Colour	Max. Load kg/mt	Static Defl. mm	Dimensions, mm				
				A	B	C	D	EØ
SHS-9	Yellow	10	33					
SHS-10	Brown	15	33					
SHS-11	Blue	30	33					
SHS-12	Black	50	28	75	65	130	86	12
SHS-13	Red	75	25					
SHS-14	Green	125	25					
SHS-16	Grey	175	20					
SHS-17	Orange	200	15					

## HOW TO ORDER

When selecting vibration isolators, divide the weight of the unit being isolated by the number of mounts being used to determine the kg/mount required. Then select the mount with the next highest weight loading and deflection required. Vibration isolators are generally used in sets of four.