

aerofresh

60 HRV

In Sync with healthier
indoor air quality



The **Aerofresh 60** now with humidity sensor utilises an innovative ceramic core heat exchanger that delivers up to 82% heat recovery. Two synchronised units alternate between exhaust and supply air flow to help maintain healthy indoor air quality, and prevent condensation and mould growth.



FANTECH
Intelligent Ventilation

Fresh air through continuous ventilation

The Aerofresh 60 decentralised energy recovery unit provides continuous ventilation to ensure a home feels fresh and comfortable to live in. Home occupants can enjoy a healthier indoor environment as the Aerofresh will improve the air quality, while being energy efficient to run and very simple to operate.

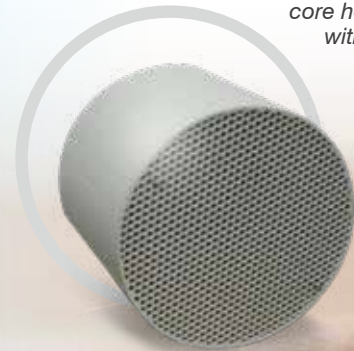
Aerofresh 60 units are installed in synchronised pairs to provide balanced ventilation (low energy operation) and promote higher levels of air circulation within the home compared to single point systems.

Helps reduce air contaminants & energy costs

Outside air coming in through windows and doors can be a major contributor to a home's heating and cooling costs. An Aerofresh 60 decentralised ventilation system can considerably reduce these energy costs by transferring up to 82% of the thermal energy from the exhaust air to the incoming fresh air. During winter it transfers the heat from the warmer indoor air and in summer the coolth from the colder air.

Natural ventilation through open windows and doors can also have other negative effects, including entry of dust and insects, a reduction in security and exposure to adverse weather conditions. Installation of an Aerofresh energy recovery system avoids these issues, and helps reduce concentrations of contaminants such as CO₂ and VOCs by supplying continuous fresh air.

Regenerative ceramic core heat exchanger with high thermal efficiency



European Made



Heat Exchanger



Energy Saver



Quiet Operation



Humidity Sensor



aerofresh
60 HRV

Aerofresh 60 shown with aluminium weatherproof external hood



Features

- Alternating exhaust/supply air flow direction (“push-pull”) ensures good air circulation
- Sleek modern internal diffuser is easily removed for cleaning
- Regenerative ceramic core heat exchanger with high thermal efficiency (up to 82%)
- Integrated humidity control to detect elevated humidity levels and increase fresh air intake accordingly
- Fitted with a high efficiency EC motor that is designed for continuous running and fitted with high quality, sealed for life bearings
- Unique winglet-type impeller provides increased efficiency and low noise
- Telescopic tube makes unit adaptable to wall thicknesses from 300mm to 560mm
- Comes standard with 2 external grilles options; a plastic grille with insect screen and an aluminium weatherproof hood with acoustic lining and insect screen
- LCD remote control to adjust speed, air flow direction, boost, efficiency and free cooling
- Insect screen is easy to remove for cleaning and maintenance from inside the home
- “Free cooling” function allows cool outside night air to enter during summer (night time purge)
- Motor protection IPX4

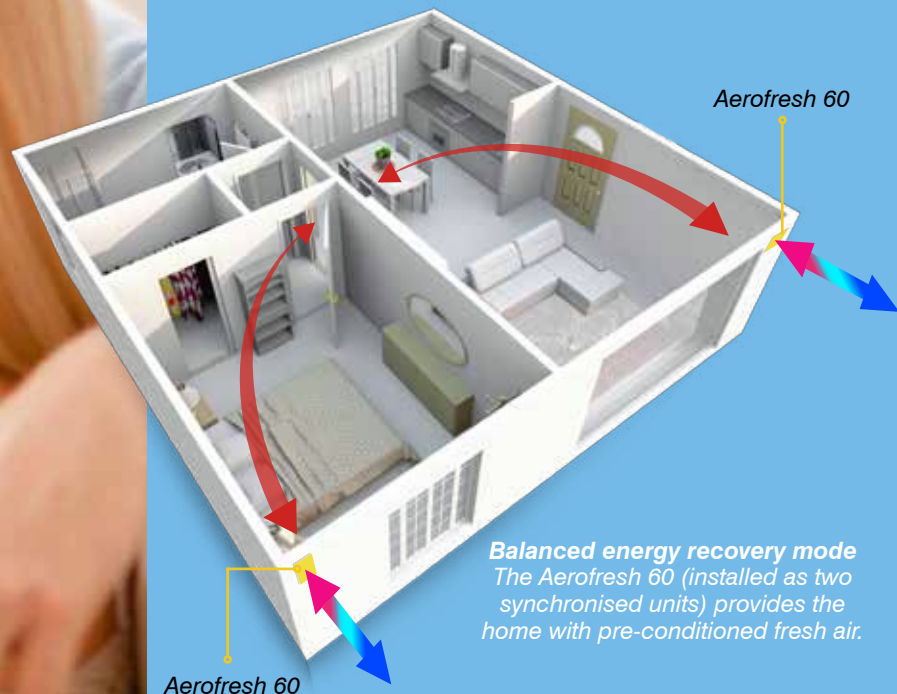
Aerofresh 60 Remote Control

- Air flow direction (alternating, extract only and intake only)
- Free-cooling mode
- 5 speed options
- Boost function
- Comfort / efficiency mode
- Filters reset



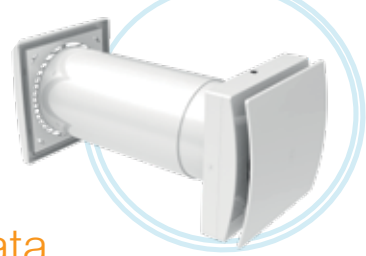
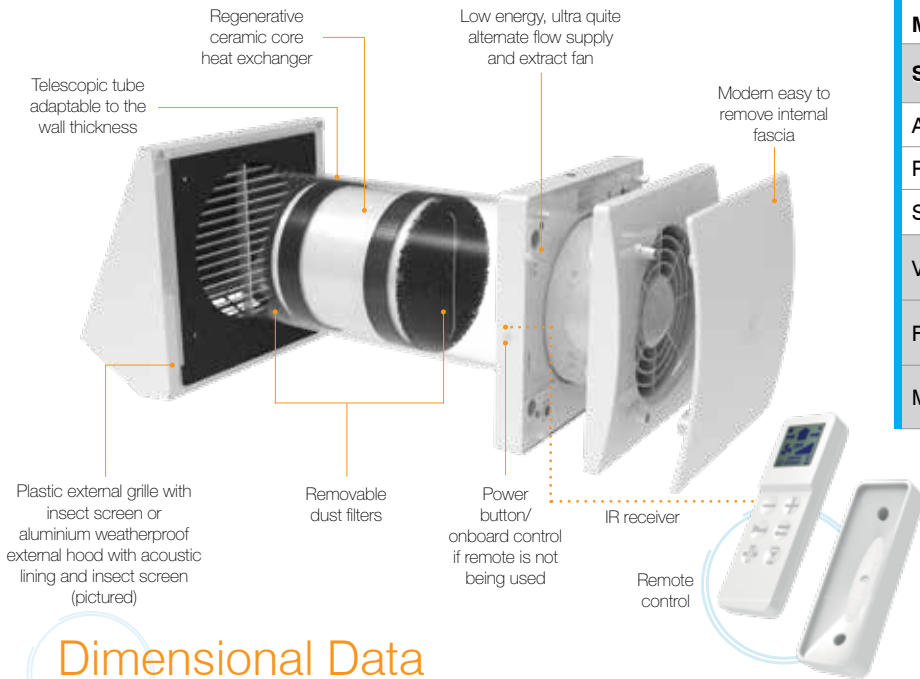
How it works

- Aerofresh 60 units are installed in pairs in separate rooms
- Both units alternate their air flow direction every 70 seconds (approx.) and are synchronised with each other so while one unit is exhausting air the other is supplying air into the home (diagram below)
- The Aerofresh unit transfers the thermal energy from air inside the building to the incoming fresh air
- The incoming pre-conditioned fresh air reduces the demand for additional heating and cooling
- Helps maintain healthy indoor air as well as prevent condensation and mould growth
- 8 to 10mm door undercut allows air flow when doors are closed
- When installing in a bedroom, ensure to position away from bed heads to avoid uncomfortable air flow and noise concerns.



Quality Key Components

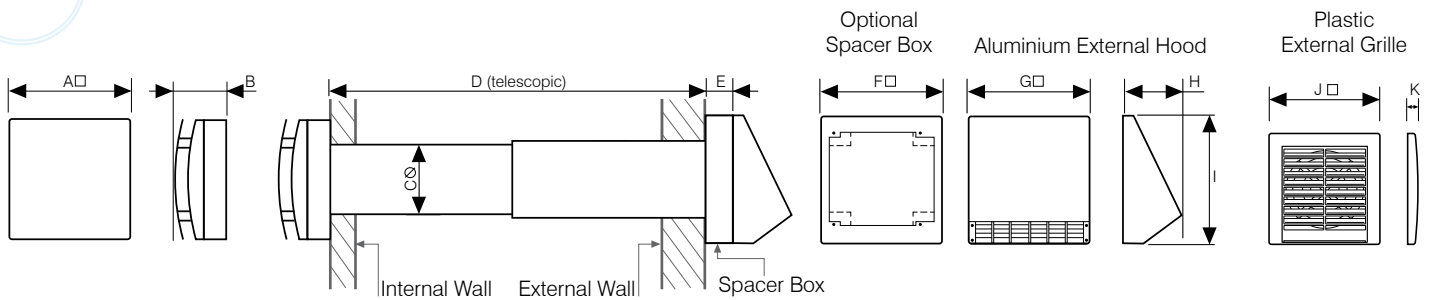
Quality Key Components



Technical Data

Model	Aerofresh 60				
Speed	1	2	3	4	5
Air flow (L/s)	6	8	11	14	17
Power Consumption (W)	2	2	3.5	4.5	6
Sound Level dB(A) @ 3m	10	14	20	24	29
Voltage	220-240 V				
Frequency	50 Hz				
Max Temperature	50 °C				

Dimensional Data



Aerofresh 60 Unit

Model No.	Description	A	B	C	D	G	H	I	J	K
AER-60HRV-KIT	Plastic External Grille	218	76	158	300 to 560	-	-	-	218	20
	Aluminium External Hood					240	91	228	-	-

Dimensions in mm

Aerofresh 60 Options

Code	Description	E	F
AEROSB60	Spacer to suit 240-299mm thick walls	60	240
AEROSB190	Spacer to suit walls less than 240mm thick	190	240
AER-60HRV-REM	Replacement remote control	-	-

Dimensions in mm



Scan the QR Code for more information



Fantech Pty. Ltd.

Victoria: (+61 3) 9554 7845
 New South Wales: (02) 8811 0400
 South Australia: (08) 8294 0530
 Northern Territory: (08) 8947 0447
 Queensland: (07) 3299 9888
 Western Australia: (08) 9209 4999
 A.C.T.: (02) 6280 5511
 New Zealand: (09) 444 6266

www.mvhr.co.nz

www.energyrecovery.com.au



For sales enquiries contact:

Specifications and design subject to change without notice.