



^{TD}Silent

The quietest
in-line fan in its class

High performance mixed-flow impeller <

Revolutionary design reduces noise <

Utilises energy efficient technology <

High quality, European made <



The **TD Silent** Series is the next generation of in-line fan. It combines the efficiency and performance of the mixed-flow impeller with revolutionary acoustic technologies.



FANTECH
Intelligent Ventilation

A real advance in fan and acoustic technology

The **TD Silent** series of mixed-flow fans incorporates a number of new technologies that make them very quiet. They are perfect as an exhaust fan in libraries, offices and hospitals as well as designer apartments and hotels where the constant sound of the ventilation system could be distracting for the occupants.

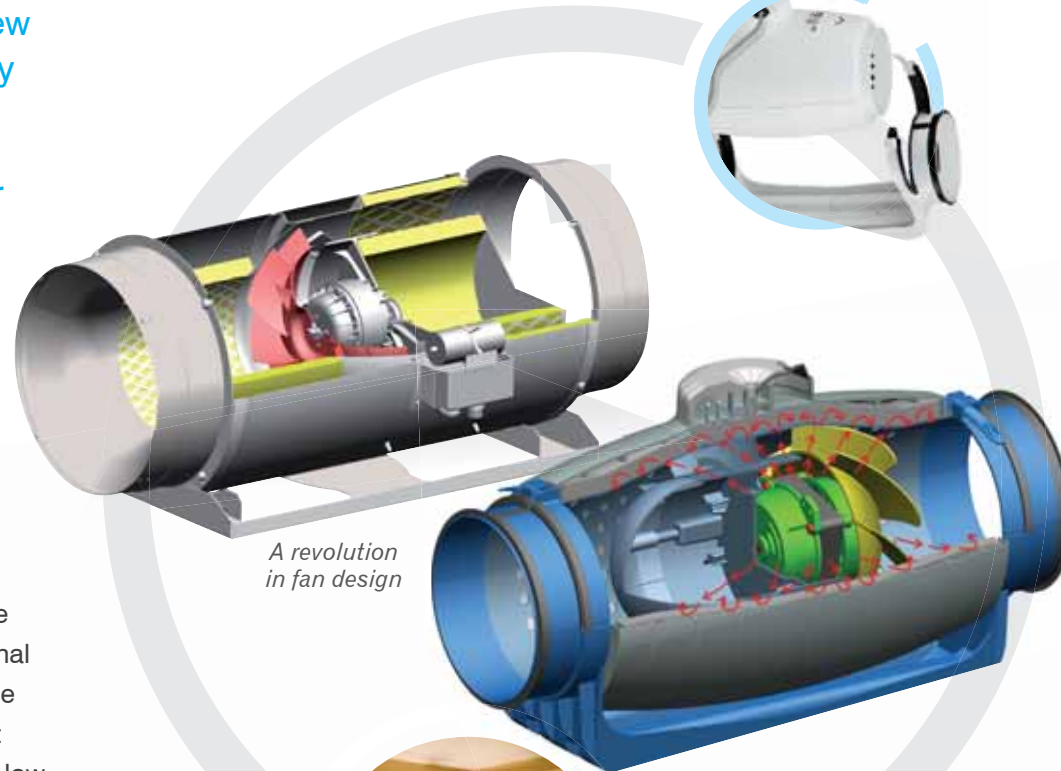
The revolutionary design of the TD Silent series makes them quieter than similar products on the market and is a real advance in fan and acoustic technology.

This breakthrough in noise reduction is due to a technically advanced design and internal construction. Sound waves produced inside the fan are captured by a sound-absorbent internal membrane, resulting in an efficient low profile fan that operates very quietly.

Conscious that installers often have confined spaces to work in, the TD Silent's design engineers have created a distinctive compact body that can be easily removed from the support brackets to assist with installation, maintenance and cleaning.

The TD Silent's other features include an integral mounting foot that makes installations more simple, a 240V plug and lead, a convenient 2-speed motor and a high performance mixed-flow impeller.

Fan body is easily removed from duct



A revolution in fan design



Hotels



Libraries



Offices

Compact units 150mm and 200mm

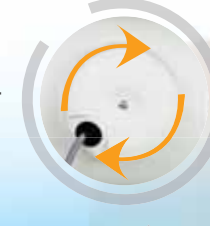
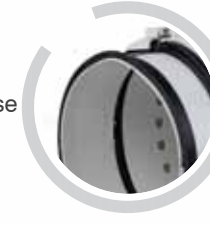
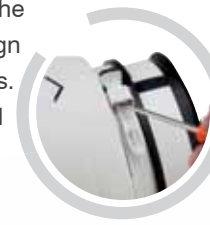
Unique features

The sleek and compact TD Silent 150 and 200mm are ideal for installations in false ceilings where space is often restricted. Integrated into the advanced composite body design are vibration absorbing elements. This includes specially designed mounting straps that grip onto a ribbed rubber gasket on the fan body that further reduces noise.

The inlet and outlet spigots also include a rubber gasket that helps to reduce air leakage and absorb vibrations which can sometimes be heard as noise along the connecting ductwork.

The distinctive body of the 150 and 200mm models can be easily removed from the ducting by releasing the strap clips and lifting it out.

Another unique feature of these models is the 360° rotating junction box that makes it easier for the power cable to be connected in tight spaces.



High capacity units 250mm and 315mm

Unique features

The TD Silent 250 and 315mm models are high performance fans that are quieter than any other fan in their class.

To help minimise the fan's dimensions and ensure a strong construction, the unit is made from durable sheet steel and finished in a protective epoxy polyester paint.

They feature an external terminal box which is rated at IP55 and a specially designed aerodynamic inlet to improve air flow performance and reduce noise.

The fan body is easily removed from the ducting for cleaning and maintenance by removing 4 screws at each end of the fan.



TD Silent, a revolutionary design

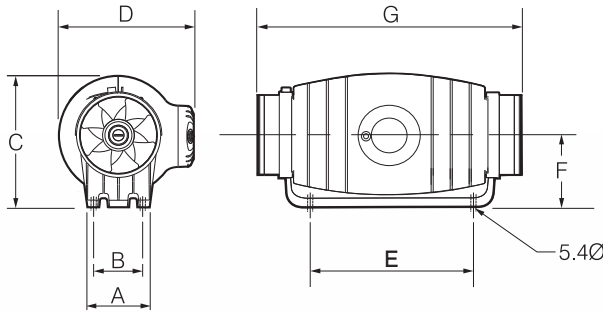
Compact Units - 150mm & 200mm

Technical Data

Model Number TD...	Fan Speed (rev/sec)	Average sound level (dB(A) @ 3m)	TD.. 1 ph.		Max. amb (°C)	App. weight (kg)
			(Watts)	(Amps)		
500/150SIL	42/33	40/33	50/44	0.22/0.19	60	6.0
800/200SIL	46/41	42/40	95/90	0.45/0.43	60	8.7

Values shown are High Speed / Low speed

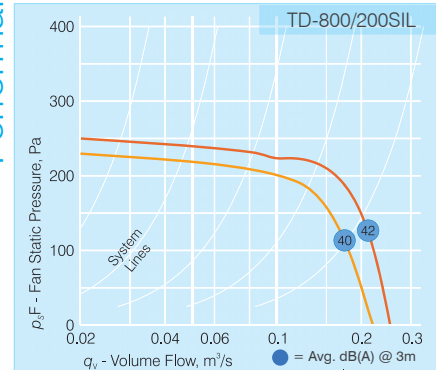
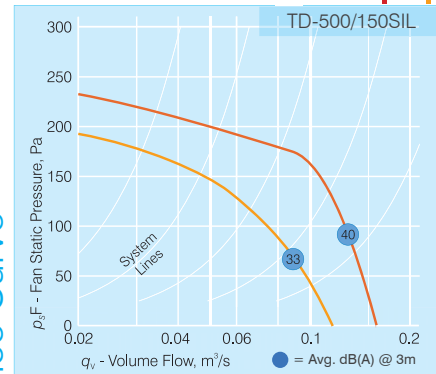
Dimensional Data



Model Number TD...	A	B	C	D	E	F	G
500/150SIL	116	96	245	250	250	134	484
800/200SIL	145	129	296	295	340	164	568

Dimensions in mm

Performance Curve



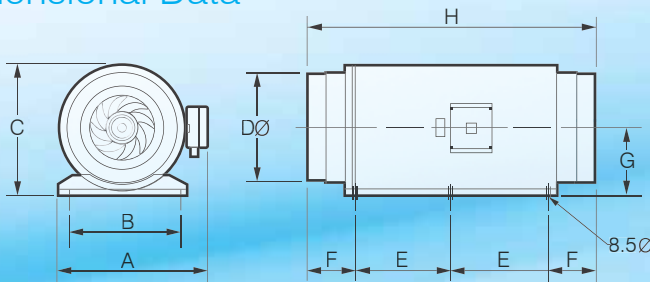
High capacity Units - 250mm & 315mm

Technical Data

Model Number TD...	Fan Speed (rev/sec)	Average sound level (dB(A) @ 3m)	TD.. 1 ph.		Max. amb (°C)	App. weight (kg)
			(Watts)	(Amps)		
1300/250SIL	42/36	47/42	197/145	0.83/0.61	60	20
2000/315SIL	44/38	50/44	297/191	1.28/0.79	60	25

Values shown are High Speed / Low speed

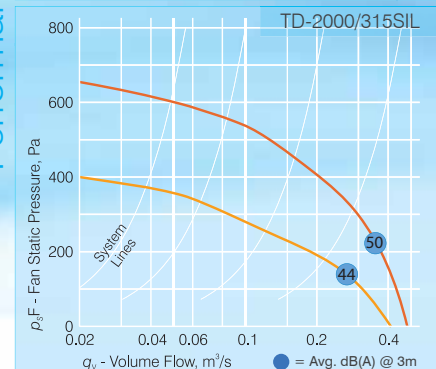
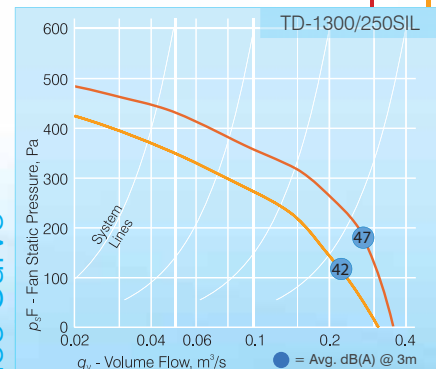
Dimensional Data



Model Number TD...	A	B	C	DØ	E	F	G	H
1300/250SIL	387	280	331	248	200	140	171	680
2000/315SIL	432	335	373	312	260	152	192	825

Dimensions in mm

Performance Curve



www.fantech.com.au

For sales enquiries contact:

Specifications and design subject to change without notice.

FAN0081 04/12



Fantech Pty. Ltd.

Victoria: (+61 3) 9554 7845
 New South Wales: (02) 8811 0400
 South Australia: (08) 8294 0530
 Northern Territory: (08) 8947 0447
 Queensland: (07) 3299 9888
 Western Australia: (08) 9209 4999
 A.C.T.: (02) 6280 5511
 New Zealand: (09) 444 6266
 South East Asia: (+603) 5121 4453