

PRODUCT CODE ALPHABETICAL INDEX

A

ABD **J-2**
Butterfly shutters for axial roof units.



AD/E..D/V **D-4/6**
Alpha/Beta Series of axial roof units.



AD/E..S **D-13/15**
Alpha Series of supply air axial roof units.



AL **E-10/15**
AL Series of aerofoil section backward-inclined centrifugal fans.



ALG **L-13**
Grilles for internal ceiling mounting, exhaust air applications.



AP **B-50/53**
AP Series of axial fans, direct-driven, adjustable pitch.



APB **B-50/53**
APB Series of axial fans, belt-driven, adjustable pitch.



APS **B-50/53**
APS Series of axial fans, direct-driven, smoke-spill, adjustable pitch.



APV **B-50/53**
APV Series of axial fans, direct-driven, vertically mounted, adjustable pitch.



AS **L-6**
Plastic air opening backdraft shutters for external mounting.



ASB **H-12/14**
Aerosound sound bar acoustic louvres



AVA **M-6**
Sensor input variable speed-controllers for single-phase fans.



B

BT **G-6/7**
BladeTec Series of High Volume, Low Speed Fans (HVLS). Cooling and De-stratification.



BFA **B-50/53**
BFA Series of bifurcated axial fans, direct-driven, adjustable pitch.



C

C1/2 **H-8/11**
Circular attenuators, open type.



C1/2P **H-8/11**
Circular attenuators, pod type.



CBD **J-2**
Backdraft shutters for Gamma, GL Gamma, Heritage and Minivent roof units.



CC **H-16**
CC Series of circular attenuators.



CCE/S **G-3**
Compact Cooler Series of portable fans.



CD/E..D/V **D-22/25**
Gamma Series of exhaust centrifugal roof units.



CD/E..S **D-32/33**
Gamma Series of supply air centrifugal roof units.



CD/EEC..S **D-34/36**
Gamma EC Series of supply air centrifugal roof units.



CD/E..VGL **D-38/40**
GL Gamma Series of vertical exhaust centrifugal roof units.



CD/E..VGL-BFC **D-45/47**
GL Gamma Series of vertical exhaust centrifugal roof units with bushfire code compliance.



CD/EEC..D/V **D-26/31**
Gamma EC Series of exhaust centrifugal roof units.



CD/EEC..VGL **D-42/44**
GL Gamma EC Series of vertical exhaust centrifugal roof units.



CF **B-3**
Compact Fan Series of axial fans.



CFT **J-6**
Mounting feet for Short Case Axial fans.



CGD/E **D-58/59**
GE Series of vertical exhaust centrifugal roof units.



CHD/E **D-48/49**
Heritage Series of vertical exhaust centrifugal roof units.



CHS **D-50/51**
Heritage Series of smoke-spill vertical exhaust centrifugal roof units.



CIC

J-7
Inlet cones for Short Case Axial fans.



CLM

I-7
Low to medium capacity seismic vibration isolators.



CMF

J-4
Matching flanges for Short Case Axial and Flameproof Miniduct fans.



CPD/E

A-16/18
Compact 2000 Series of square plate axial fans.



CPD/E..EC

A-19/21
Compact 2000 EC Series of square plate axial fans.



CSM

I-7
Low capacity seismic vibration isolators.



CTS/L/U/Z

H-18/20
Cross-Talk attenuators.



CWM

I-7
Low to medium capacity seismic vibration isolators.



D

DCV

M-18/24
EC controllers and sensors.



DG

J-9
Finger guards for Short Case Axial and Compact 2000 fans.



DJG

L-13
Grilles for internal ceiling mounting, supply or exhaust air applications.



DPL

L-10
External mounting, ABS plastic fixed louvre grille for EDM-300 wall fan.



DPS

L-10
Spacer plate for Slimfit louvre grille (DPL150).



DSS

A-29
3-speed switch to suit Ezifit In-Wall fan.



A-L

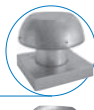
E

ECE D-52/53

Ezifit Thru Roof Series of exhaust roof mounted fans.

**ECE...BFC D-54/55**

Ezifit Thru Roof Series of exhaust roof mounted fans with bushfire code compliance.

**ECE..S D-56/57**

Ezifit Thru Roof Series of supply air roof mounted fans.

**EDM A-4/5**

EDM Series of wall and ceiling mounted fans.

**EIE A-28/29**

Ezifit In-Wall Series of exhaust external wall mounted fans.

**ELDA L-11**

Aluminium fixed louvre for external mounting.

**EWE A-30/31**

Ezifit Thru Wall Series of exhaust external wall mounted fans.



F

F J-6

Mounting feet for axial flow fans.

**FC J-5**

Fast clamps to suit in-line fans.

**FG J-9**

Finger guards for axial fans.

**FGR J-10**

Filter units to suit a range of fans.

**FLD..DD E-3/6**

FlexLine Series of direct-driven centrifugal fans.

**FLX..F/FH E-6**

FlexLine mounting feet.

**FLX..MF J-5**

FlexLine matching flanges.

**FMK G-2**

Misting kits for Pedestal Cooler Fans.



FPD

FlatPack Low Profile Duct System.

L-2/3



FPMD

Compact Flameproof Miniduct series of in-line axial fans.

B-32/33



FPSP

Compact Flameproof square plate axial fans.

A-26/27



FSU

Filtered supply air unit.

A-32



FT

Mounting feet for PowerLine and Multiflow in-line fans.

J-6



G

GRE

Sigma Series of single-width forward-curved centrifugal fans.

E-2



H

HB

HB Series header box fan.

A-33



HBF

Flair Series header box fan.

A-35



HDC

Airbox Series header box fan..

A-34



HC

High Capacity Series of vertical exhaust adjustable pitch axial roof units.

D-60/62



HCM

HCM Series of window and wall mounted fans.

A-10/11



HCM..CAP

Weather cap for HCM fans.

A-11



HV..AE

Stylvent Series of window and wall mounted fans.

A-12/13



HV..CAP

Weather cap for Stylvent fans.

A-13



HXM

HXM Series of square plate propeller fans.

A-15



I

IC

Inlet cones for axial flow fans.

J-7



ILG

Grilles for low air flow internal ceiling mounting, supply or exhaust air applications.

L-13



IS30P

Inlet Spigot for Profile Fan roof units.

D-65



J

JCC

EcoVent Series of Intelligent Controllers.

F-12



JCE

JetStream Fan Series of in-line centrifugal fans.

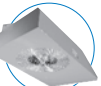
B-20/21



JISU

JetVent Series of centrifugal impulse ventilation fans.

F-8/9



JIU

JetVent Series of mixed-flow impulse ventilation fans.

F-6/7



JIU-COMMISSION F-13

Smoke detector commissioning kit for JetVent JIU-CPCEC.



JIU-CPCEC

JetVent EC Series of centrifugal impulse ventilation fans.

F-10/11



JV

JetVent Series of axial impulse ventilation fans.

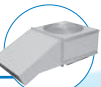
F-4/5



JWV

JetVent Airmover Series.

G-4



L

L

L Series of laminar flow backward-inclined centrifugal fans.

E-10/15



LPT

JetVent Pollutant Sensors.

F-13



LSD

Grilles for internal ceiling mounting, exhaust air applications.

L-14



PRODUCT CODE ALPHABETICAL INDEX

M

MAGLOK J-8
Magnetic closure device for butterfly shutters on axial roof units.



MF J-4
Matching flanges for axial flow fans.



MMD/E B-42/46
Multiflow series of in-line mixed-flow fans.



MRJ J-9
Inlet guard for mixed-flow fans.



MRV D-10
Minivent Series of Relief Air Vents.



MRV..BFC D-11
Alpha Series Relief Air Vents with bushfire code compliance.



MTP/S B-24/25
Minitube Series of in-line axial fans.



MV.E D-2/3
Minivent Series of axial roof units.



MV.S D-13/15
Minivent Series of supply air axial roof units.



N

NR & NRD I-4
Rubber-in-shear vibration isolators.



NXL M-8
Vacon NXL variable speed drives. 1.1-30 kW, IP54



O

OVK1 B-22
OdourVac Toilet Ventilation Kit.



OVK2 B-23
OdourVac toilet, bathroom/laundry add-on kit.



P

PAA B-54/55
Prefabricated assemblies for AP/APS axial fans



PCD/E B-34/36
PowerLine Series of in-line centrifugal fans.



PCD/E..EC B-38/41
PowerLine EC Series of in-line centrifugal fans.



PCO F-13
BMS interface cards for EcoVent controller.



PFA D-64/65
Profile Fan Series of downflow exhaust axial roof units.



PFC D-64/65
Profile Fan Series of centrifugal roof units.



PFL L-9
PVC fixed louvre grilles for external mounting.



PFR D-10
Profile Relief Air Vent.



PGL L-7
PVC air opening backdraft shutters for external mounting.



POW J-4
Matching flanges for PowerLine and Multiflow in-line fans.



POW..SIL H-17
Attenuators to suit PowerLine and Multiflow in-line fans.



PSET G-2
Pedestal Cooler Fan, stand mounted.



PWET G-2
Pedestal Cooler Fan, wall mounted.



R

R3T H-4/7
Rectangular thick wall duct attenuators with tapered splitters.



RCG L-12
Grilles for internal ceiling mounting, exhaust air applications.



RDE D-16/19
New Generation Series of downflow exhaust axial roof units.



RDLE D-7/8
Alpha Industrial Series of downflow exhaust axial roof units.



RDS D-16/18
New Generation Series of supply air axial roof units.



RDS..BFC D-20/21
New Generation Series of supply air axial roof units with bushfire code compliance.



RED B-17
Reducer for TD-EcoWatt, Mixvent and ProVent fans 300 to 315 diameter.



RICK K-5
Ancillary equipment for electronic VAV diffuser series.



RIL B-18/19
ProVent Series of in-line mixed-flow fans



RH & RHD I-4
Rubber-in-shear hanger mounts.



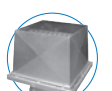
RP A-8/9
Ring Plate Series of ceiling and wall mounted axial fans.



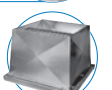
RSK J-3
Backdraft dampers for in-line fans.



RSS D-16/19
New Generation Series of smoke-spill vertical exhaust axial roof units.



RSSL D-7&9
Beta Industrial Series of smoke-spill vertical exhaust axial roof units.



RT H-4/7
Rectangular duct attenuators with tapered splitters.



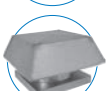
RT..QS H-4/7
Rectangular duct attenuators with tapered and sealed splitters.



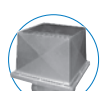
RV D-10
Alpha Series of Relief Air Vents.



RV..BFC D-11
Alpha Series of Relief Air Vents with bushfire code compliance.



RVE D-16/19
New Generation Series of vertical exhaust axial roof units.



RVF D-66
Flanged series of vertical discharge cowls.



RVLE D-7&9
Beta Industrial Series of vertical exhaust axial roof units.



RVV D-12
Beta Series of vertical discharge cowls.



M-Z

S

SBL **H-12/14**
Sound bar acoustic louvres.



SCD/E **B-26/27**
Short Case Series of in-line axial fans.



SCD/E..EC **B-28/31**
Short Case EC Series of in-line axial fans.



SD1 **M-7**
Star/delta switch for 2-speed star/delta three-phase fans.



SHLD **I-6**
Hanger type spring vibration isolators - 50mm deflection.



SHS **I-5**
Hanger type spring vibration isolators - 25mm deflection.



SHWD **I-6**
Hanger type spring vibration isolators - 50mm deflection.



SILDES **A-2/3**
Silent Design Series of wall and ceiling mounted fans.



SJK **J-3**
Backdraft dampers for in-line fans.



SQA/B **A-23/25**
SQ Series of square plate axial fans.



SRS **A-13**
Reversing switch for Stylvent fans.



SS **D-60/62**
SS Series of smoke-spill vertical exhaust adjustable pitch axial roof units.



T

TFC6 **M-17**
Fan control thermostat.



TCD/E **D-22/25**
Gamma Series of twin fan centrifugal roof units.



TD **B-14/17**
TD Mixvent Series of in-line mixed-flow fans.



TD..ECO **B-10/12**
TD EcoWatt EC Series of in-line mixed-flow fans



TD..SIL **B-6/9**
TD Silent Series of in-line mixed-flow fans



TSS **B-17**
2-speed switch to suit in-line mixed-flow fans.



U

ULT **A-36/37**
Ultimate Series header box fan.



V

V001 **M-9**
Vacon 10 variable speed drives. 0.25-5.5 kW, IP20.



V002 **M-10**
Vacon 20 variable speed drives. 0.25-18.5 kW, IP20/21.



V002..X/XMS **M-11**
Vacon 20X variable speed drives. 0.75-7.5 kW, IP66.



V010..H **M-12**
Vacon 100 HVAC variable speed drives. 1.1-160 kW, IP54



V010..X **M-13**
Vacon 100 X variable speed drives. 1.1-37 kW, IP66.



VA **M-5**
Variable electronic speed-controller for single-phase fans.



VA..PL **M-6**
Variable plug-in electronic speed-controller for single-phase fans with a 3-pin plug.



VA..4PL **M-16**
Run-on timer & speed controller with 4-pin plug supply and plug-in outlet.



VCD..4 **K-2/3**
Square to round style thermo-disc VAV diffuser series.



VCD..1 **K-6/7**
Square to round style electronic VAV diffuser series.



VCW **A-6/7**
Vogue Series of ceiling and wall mounted axial fans.



VM **B-4/5**
VentMajor Series of in-line centrifugal fans.



VLN../1/2 **K-8/9**
Linear slot style electronic VAV diffuser series.



VSD..4 **K-2/3**
Square to square style thermo-disc VAV diffuser series.



VSD..1 **K-6/7**
Square to square style electronic VAV diffuser series.



VSW..1 **K-6/7**
Square to swirl style electronic VAV diffuser series.



VZ

Direct wired run-on timer.



VZ..PL **M-15**
Run-on timer with 4-pin plug supply and plug-in outlet.



VZ2..TS **M-14**
Run-on timer with direct wired supply, plug-in outlet and single switch input.



VZ-ISNSE **M-17**
Power sense switch for automatic fan control.

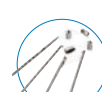


VZM0..TS **M-15**
Run-on timer with direct wired supply, plug-in outlet and multi-switch input.



W

WALLRODSPK **J-10**
Wall rods for attaching Stylvent and HCM fans to the wall.



WBD..1 **K10/11**
Wall/bulkhead style electronic VAV diffuser series.



WJ **B-48/49**
WhisperJet Series of fan and silencer kits.



WP **J-11**
Wall plate to suit Stylvent and HCM fans.



WSK **L-8**
PVC air opening backdraft shutters for external mounting.



WT..PPK **L-4 & J-11**
Wall tubes to suit a range of fans.



X

XL **I-5**
Spring type vibration isolators - 25mm deflection.



XLD **I-6**
Spring type vibration isolators - 50mm deflection.



XSB **I-5**
Spring type vibration isolators - 25mm deflection.



XWD **I-6**
Spring type vibration isolators - 50mm deflection.



Z

ZFH **G-5**
ZOO (Zone of Occupancy) Series of Cooling and De-stratification fans.

